



University of
St Andrews

St Andrews Research Engagement Fellowship

Research, Impact and Innovation Committee

May 26th, 2023

Sandra Appleby-Arnold, Head of Engagement with Research

St Andrews Research Engagement Fellowship



University of
St Andrews



- Collaboration between St Andrews and Dundee Science Centre (discussions with additional partners ongoing)
- Placing academics at the interface between scientific research and public audiences
- Gain insight into the everyday work of research engagement professionals, i.e., conceptualisation, development and delivery of:
 - activities, materials, and artefacts for effective engagement with research
 - positive relationships with visitors and proactive management of audience experience
 - educational activities with and in schools across Scotland
 - content for science festivals and similar events
- Opportunity for Fellows to develop their own research showcase





STUDY WE ARE DISCOVERING

Welcome to...
WE ARE DISCOVERING

"The whole is more than the sum of its parts"
- Aristotle

Discover something new
Every day

Play your part





Example: Medical Marvels Exhibit



Space for engagement



SEALS OF ANTARCTICA

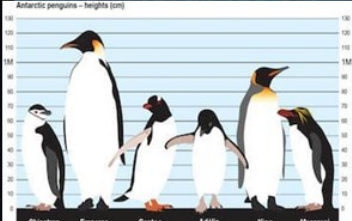
- CRABEATER SEAL:** ONLY SEAL TO RUN UPON BLOODED PREY
- ROSSL SEAL:** USE THEIR TEETH TO CRAWL HOLES IN THE ICE
- LEOPARD SEAL:** HAVE LARGE EYES IN ORDER TO PREY ON SOONER VISION
- BOSS SEAL:** KEEPS WARM WITH THE OILY BLUBBER
- ANTARCTIC SEAL:** DOESN'T ACTUALLY EAT CRABS!
- OTAR:** DIVES OF THE SEAL WORLD
- CRABEATER SEAL:** DOESN'T ACTUALLY EAT CRABS!

ASOC.ORG

Explorers

Stay SAFE near water

Always remember to stay SAFE near water - Stay Away From the Edge.



DIY Science - Make Your Own Lava Lamp

INSPIRING STEM

the oil. There we go. Is that enough do you think, James?

THE CHEMISTRY OF JAM-MAKING

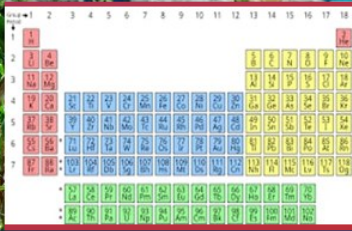
65-69% REMOVED FROM JAM CONTENT OF JAM

2, 2, 3, 3 OPTIMAL pH FOR SETTING

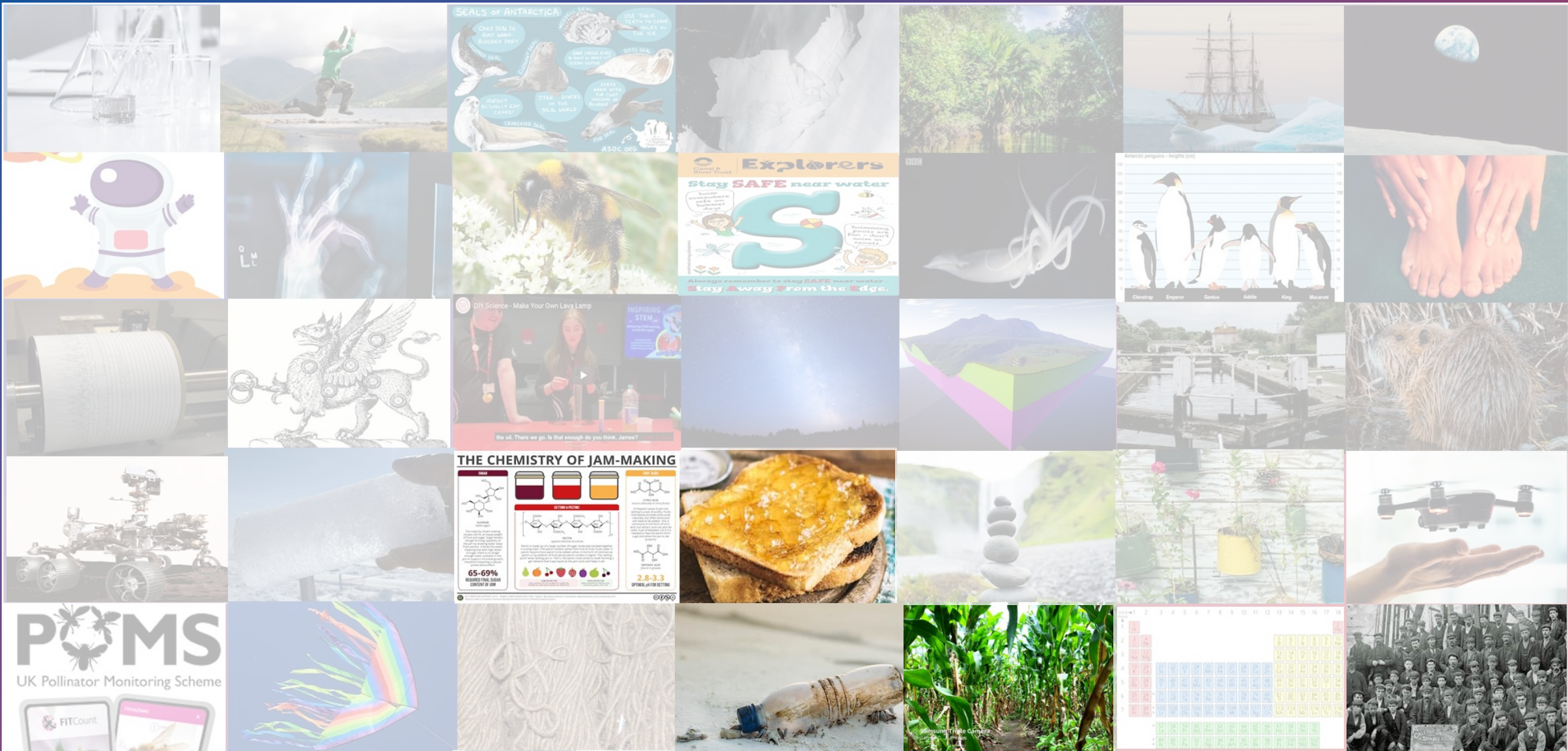
POMS

UK Pollinator Monitoring Scheme

FITCount



Learning and engagement resources



Learning and engagement resources



Learning and engagement resources



Benefits

- In-depth understanding of and **practical skills** in effective, impactful engagement with research.
- Learn to think about **engagement** with research **across disciplines**.
- Play an **active role** in diverse types of public engagement events.
- Become **part of a network** of communicators and public organisations that connect various communities with research.
- Increased ability to **enhance future grant proposals** by demonstrating effective engagement with research experience.



Duration

- Up to 12 weeks full-time, or equivalent part-time (e.g., multiple shorter blocks, or 1-2 days per week)
- Maximum period of one year

Funding

- 80% of staff buyout (up to £10,000) or 100% PhD student stipend fees
- Travel costs; materials/equipment for showcase (up to £500)

Eligibility

- All St Andrews academic and professional services staff
- PhD students (years 3 or 4)

Application procedure

- Application form (downloadable Word)
- HoS / Department / Unit Letter of support
- For PhD students additionally: Letter of support from their supervisor
- Submission deadline: August 31st, 2023

For any questions, please contact
hor-engagement@st-andrews.ac.uk